

TankJet® Accessories

Simplify Installation, Optimize Performance

ADJUSTABLE FLANGES FOR TANKJET AA190 AND AA090 TANK CLEANERS

Features and Benefits

- Maximize cleaning effectiveness by positioning nozzle turret to clean around obstructions or targeting skim lines or other areas requiring extra impact
 - Standard adjustable flanges allow positioning the nozzles at various depths along the length of the extension
 - Adjustable ball swivel flanges allow adjustment of the spray head by as much as 60°
- Choice of connections: tri-clamp fitting, three-prong flange, 150# flange connection

ADAPTERS AND MOUNTING KITS

Features and Benefits

- Tapered manway adapter enables drop-in-place installation of the TankJet 360 with tanker truck openings between 17" and 21" (432 and 533 mm); 304 stainless steel construction
- Chemically-resistant adapter enables any air or electric TankJet AA090 or AA190 tank cleaner to be used in tanks with inlet sizes ranging from 2" to 4"
- Simplify mounting the standard TankJet AA190 4" three-prong flange to a 4" 150# flange. Kit includes a 4" 316 stainless steel raised face flange, stainless steel lock washers, bolts and PTFE gasket

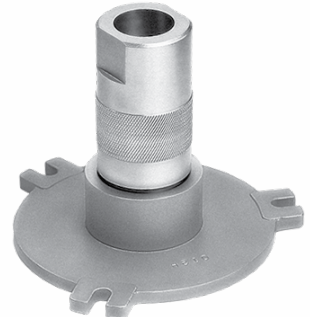


Adjustable Flange

Choice of 2-1/2", 3", 4" or 6" tri-clamp fittings

Three-prong Adjustable Flange

Can be used with TankJet AA090 and AA190 tank cleaners



Raised Face Adjustable Flange

Choice of 2", 3" or 4" 150# raised face flanges

Ball Swivel Adjustable Flange

Choose 4" or 6" 150# adjustable ball swivel flanges. 4" sanitary version also available



Manway Adapter

Includes vent for vapor release, shield to prevent liquid from spraying into vent and removable plug that allows cone to be filled with liquid if additional weight is desired



Mounting Kit

Includes everything you need – flange, lock washers, bolts and gasket

Adapter for TankJet AA090 and AA190 Tank Cleaners

Has a 6.25" OD, Celcon® construction with 304 stainless steel screws



Celcon® is a registered trademark of Celanese Corporation.



Ordering Information

Adjustable Flange

39205	–	3	–	316SS
 Model No.		 Flange Size		 Material Code

Raised Face Adjustable Flange

46395	–	4	–	316SS
 Model No.		 Flange Size		 Material Code

Three-prong Adjustable Flange

22250	–	316SS
 Model No.		 Material Code

Ball Swivel Adjustable Flange

43047	–	4	–	316SS
 Model No.		 Flange Size		 Material Code

Adapter

45260	–	CE
 Model No.		 Material Code

Mounting Kit

39204	–	4	–	316SS
 Model No.		 Flange Size		 Material Code

Manway Adapter

46573	–	SS
 Model No.		 Material Code

Dimensions and Weights

Model No.	Length	Outside Diameter	Weight
Adjustable Flange for Tanks with Tri-Clamp Fitting			
39205-2-1/2	4-3/4" (121 mm)	3" (76 mm)	2 lbs. (.9 kg)
39205-3	4-3/4" (121 mm)	3.6" (91 mm)	2.1 lbs. (.95 kg)
39205-4	4-3/4" (121 mm)	4.7" (119 mm)	2.5 lbs. (1.1 kg)
39205-6	4-3/4" (121 mm)	6.6" (168 mm)	5.3 lbs. (2.4 kg)
Adjustable Three-Prong Flange			
22250	4-1/16" (103 mm)	5" (127 mm)	2.8 lbs. (1.3 kg)
Adjustable Flange for Tanks with 150# Connections			
46395-2	4-13/16" (122 mm)	6" (152 mm)	12 lbs. (5.4 kg)
46395-3	4-15/16" (125 mm)	7.5" (191 mm)	12.9 lbs. (5.9 kg)
46395-4	5" (127 mm)	9" (229 mm)	17.7 lbs. (8.0 kg)
Ball Swivel Adjustable Flange			
43047-4	6-3/4" (172 mm)	9" (229 mm)	20 lbs. (9.1 kg)
43047-6	6-3/4" (172 mm)	11" (279 mm)	30 lbs. (13.6 kg)
Tapered Manway with 1-1/2" NPT (M) Both Ends			
46573	46" (1,168 mm)	22" (559 mm)	75 lbs. (34 kg)
Adapter			
45260	3-3/16"	6.25" (159 mm)	1 lb. (.45 kg)
Mounting Kit			
39204	15/16" (24 mm)	9" (229 mm)	15 lbs. (6.8 kg)