

TankJet® D40159 and D26984

FLUID DRIVEN TANK CLEANING NOZZLES

Constant-Speed Nozzles Provide Superior Cleaning and a Choice of Spray Coverages

Features and Benefits

- Features three flat sprays mounted in a rotating spray head driven by the flow of the cleaning liquid
- Rotates at nearly constant speed of 2 to 30 RPM over a wide range of fluid pressures for more thorough cleaning
- Up to four times higher impact than a conventional rotating nozzle for improved cleaning efficiency
- Perfect for cleaning, sanitizing and foaming applications; slow controlled rotational speed provides more dwell time on tank surface
- PVDF nozzle body constructed of chemical and corrosion resistant Kynar® with a PTFE washer and a polyethylene sleeve
- 303 or 316 stainless steel body available with a PTFE sleeve and washer
- Sanitary tubing and wall mounting options available upon request



TankJet D40149 and D26984
tank cleaning nozzles for tanks
up to 20' (6 m) in dia.

TankJet D40159 and D26984 nozzles are available in stainless steel and PVDF; ATEX-certified explosion-proof models are available in stainless steel

Specifications

Max. tank dia.:	20' (6.0 m)
Flow rate range:	3.2 to 31 gpm (12.0 to 128 l/min)
Pressure range:	30 to 230 psi (2 to 16 bar)
Max. operating temperature:	160°F (70°C)
Min. tank opening size:	2.25" (56 mm)
Spray coverage:	D40159 – 65°, 120°, 180° and 260°; D26984 – 360°
Inlet conn.:	1/2" NPT or BSPT for stainless steel versions; 3/8" and 1/2" NPT or BSPT for PVDF versions

Kynar® is a registered trademark of Arkema, Inc.

Ideal for Cleaning:

- Chemical processing tanks
- Dry powder tanks
- Food processing tanks
- Mixing tanks
- Pharmaceutical tanks

D40159 Spray Coverage

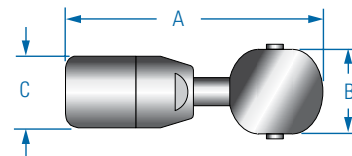
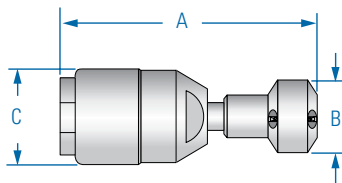
Spray Angle	260° Down	260° Up**	180° Down	180° Up**	120° Down	65° Down
Capacity Size						
3.2	●			●	●	
4.5	●		●	●	●	
9.9	●	●	●	●	●	●
13.6	●	●	●	●		

Note: D40159-SS, -316SS not available in 3.2 capacity. D26984 available in 360° only.

Performance Data

Nozzle Inlet	Nozzle Type		Capacity Size	Capacity gpm (l/min)				
	PVDF	SS, 316SS		30 psi (2 bar)	40 psi (3 bar)	100 psi (5 bar)	150 psi (10 bar)	230 psi (16 bar)
3/8	●		3.2	3.2 (12)	3.5 (14)	5.3 (17)	6.5 (24)	7.9 (30)
	●		4.5	3.8 (14.5)	4.4 (17.0)	6.9 (22)	8.5 (32)	10.5 (40)
1/2	●	●	3.2	3.2 (12)	3.5 (14)	5.3 (17)	6.5 (24)	7.9 (30)
	●	●	4.5	3.8 (14.5)	4.4 (17)	6.9 (22)	8.5 (32)	10.5 (40)
	●	●	9.9	8.4 (31.8)	9.7 (40)	15.5 (52)	19.1 (73)	24 (93)
	●	●	13.6	11.3 (42.9)	14.0 (55)	21 (71)	26 (101)	31 (128)

Dimensions and Weights



PVDF Models

A	B Dia.	C Dia.	Weight
5-3/4" (146 mm)	1-15/16" (49 mm)	1-59/64" (49 mm)	.43 lbs. (0.19 kg)

303 and 316 Stainless Steel Models

A	B Dia.	C Dia.	Weight
5-3/4" (146 mm)	2" (50 mm)	1-3/5" (41 mm)	1.62 lbs. (0.73 kg)

Ordering Information

TankJet D40159 Tank Cleaning Nozzle					
D40159	-	3/8	-	PVDF*	3.2 - 260 A**
Nozzle Type	Inlet Conn.	Material Code	Capacity Size	Spray Angle	Spray Dir..

TankJet D26984 Tank Cleaning Nozzle				
D26984	-	3/8	-	PVDF* - 3.2
Nozzle Type	Inlet Conn.	Material Code	Capacity Size	

*Material: Specify PVDF for Chemical Resistant Kynar®. Specify SS for Stainless Steel Type 303 (DIN 1.4305). Specify 316SS for Stainless Steel Type 316 (DIN 1.4571).

**Add "A" to the D40159 part number for upward spray toward inlet.

Add B prior to the inlet connection for BSPT connections.