


TankJet® D41800E

FLUID DRIVEN TANK CLEANING NOZZLES

Compact, Constant-Speed Nozzles
Provide Superior Cleaning

Features and Benefits

- Features three flat sprays mounted in a rotating spray head driven by the flow of the cleaning liquid
- Rotates at nearly constant speed of 2 to 30 RPM over a wide range of fluid pressures
- Up to four times higher impact than conventional rotating nozzles
- Perfect for cleaning, sanitizing and foaming applications; slow controlled rotational speed provides more dwell time on tank surface
- Compact – fits in most tank openings as small as 1-1/4" (31 mm)
- Patented self-flushing water bearing design eliminates internal bearings or races
- All 316 stainless steel construction for maximum wear resistance; meets the European ATEX standard for use in explosive environments 
- Sanitary pin version conforms to 3A sanitary standard 78-01 for spray cleaning devices to remain in place
- Operates at high temperatures – up to 300°F (150°C)

Specifications

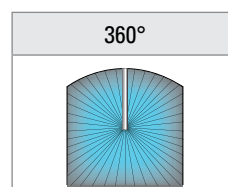
Max. tank dia.:	12' (3.7 m)
Flow rate range:	2.7 to 33 gpm (12 to 128 l/min)
Pressure range:	30 to 230 psi (2 to 16 bar)
Max. operating temperature:	300°F (150°C)
Min. tank opening size:	1-1/4" (31 mm)
Spray coverage:	360°
Inlet conn.:	3/8" NPT or BSPT, DN19



TankJet D41800E constant speed tank cleaning nozzles for tanks up to 12' (3.7 m) in dia.

Sanitary pin connection conforms to 3A standards for CIP

Spray Coverage



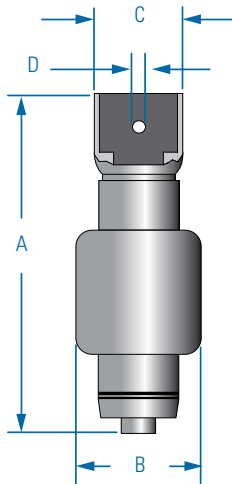
Ideal for Cleaning:

- Chemical processing tanks
- Dry powder tanks
- Food processing tanks
- Mixing tanks
- Pharmaceutical tanks

Performance Data

Capacity Size	Capacity gpm (l/min)				
	30 psi (2 bar)	40 psi (3 bar)	100 psi (5 bar)	150 psi (10 bar)	230 psi (16 bar)
3.2	2.9 (10.8)	3.5 (14)	5.3 (17)	6.5 (24)	7.9 (30)
4.5	4.0 (15.1)	4.8 (19)	7.5 (24)	9.1 (34)	11.3 (43)
9.9	8.8 (33.2)	10.1 (40)	16.1 (52)	19.7 (73)	24 (93)
13.6	12.1 (45.7)	14.0 (55)	22 (71)	27 (101)	34 (128)

Dimensions and Weights



Nozzle Type	Inlet Conn.	A	B Dia.	C Dia.	D Dia.	Weight
D41800E	3/8"	3" (78 mm)	1-3/16" (30 mm)	27/32" (21 mm)	-	.28 lbs. (0.13 kg)
	DN19	3-7/32" (82 mm)	1-3/16" (30 mm)	27/32" (21 mm)	.094" (2.4 mm)	.29 lbs. (0.13 kg)

Dimensions do not include connection pin length.

Ordering Information

TankJet D41800E Tank Cleaning Nozzle 3/8" Threaded Connection

D41800E	-	3/8	-	316L*	9.9
Nozzle Type		Inlet Conn.		Material Code	Capacity Size

TankJet D41800E Tank Cleaning Nozzle DN19 Sanitary Connection

D41800E	-	19	-	316L*	9.9	-	3A
Nozzle Type		Inlet Conn.		Material Code	Capacity Size		3A Version

*Materials: Specify SS for Stainless Steel Type 303 (DIN1.4305). Specify 316L for Stainless Steel Type 316L (DIN1.4404).

Add B prior to the inlet connection for BSPT connections.